

General description

The SDCRDAC24b is a 24-bit sigma-delta charge-redistribution digital-to-analog converter (DAC). It is designed to have high absolute accuracy, low flicker noise and low power consumption, and it is robust against temperature variations and radiation. This makes the DAC ideally suited for demanding control applications in a wide variety of environments.

This product is silicon-verified.

Features

- noise floor: -131 dBV (10 μ Hz – 1 Hz)
- noise floor: -128 dBV (1 Hz – 50 Hz)
- sample rate: 0-200 kS/s
- total out-of-band noise: < -60 dB
- quasi-differential output
- low latency: 4.25 μ s
- radiation hardened
- total power consumption: 2.5 mW
- gain stability vs temperature: 1.5 ppm/K
- technology: UMC 0.18 μ m CMOS
- silicon-verified
- design is scalable with regard to area and performance

Applications

- high-precision control systems
- automatic test equipment
- gain and offset adjustment/calibration
- programmable voltage and current sources
- process and servo control
- space applications
- high-quality audio (with minor scaling and other modifications to DAC)

Block diagram

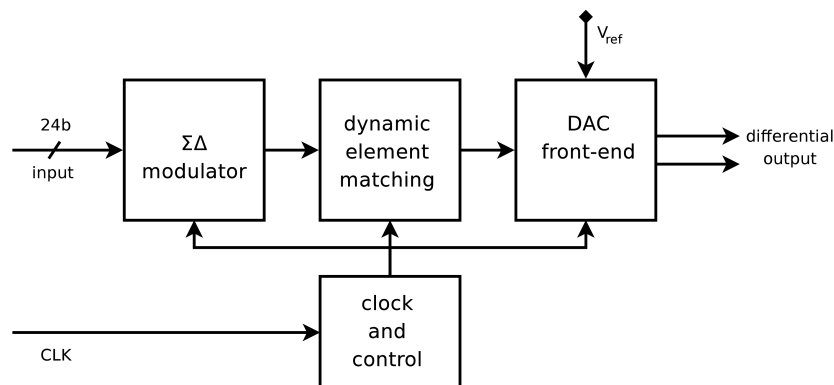


Figure 1: block diagram

Specifications

$V_{\text{dig}}=1.8\text{ V}$, $V_{\text{ref}}=1.8\text{ V}$, $f_{\text{CLK}}=4\text{ MHz}$, unless noted otherwise

parameter	description	min	typ	max	units
Interfacing					
f_{CLK}	clock frequency	0	4		MHz
V_{dig}	digital supply voltage	1.6	1.8	2	V
V_{ref}	reference voltage	1	1.8	2	V
n	input data width		24		bits
$f_{\text{s,in}}$	update rate input data	0	100	$f_{\text{CLK}}/20$	S/s
$V_{\text{out,max}}$	output amplitude (differential)		2.14		V_{pp}
$V_{\text{out,cm}}$	DC output voltage (common-mode)		0.9		V
I_{ref}	current drawn from reference supply (1.8V)		400*		μA
I_{dig}	current drawn from digital supply (1.8 V)			970**	μA
Performance					
N_{LF}	noise floor (10 μHz – 1 Hz)		-131		dBV
N	noise floor (1 Hz – 50 Hz)		-128		dBV
OOBN	out-of-band noise: with load 1 M Ω // 1 nF unloaded or virtual-ground load unloaded or virtual-ground load, no dithering		<-60 -65 -71		dB dB dB
THD	total harmonic distortion with load 1 M Ω // 1 nF		-83		dBc
	gain stability vs. temperature with load 1 M Ω // 1 nF any load >1 M Ω		-1.5	7	ppm/K ppm/K
TID	total ionizing dose without effects on DAC output signal			>133	krad
SEE	single events without effects on DAC output signal (expected, not yet verified)			50	MeV·cm ² /mg
Implementation					
N_{gates}	number of gates, including flipflops		5663		
$N_{\text{flipflops}}$	Number of flipflops		334		
A_{analog}	die area of DAC front-end		1.18*		mm ²
A_{total}	Total die area, including digital, in UMC 0.18 μm CMOS		2.22*		mm ²

* Both the current drawn from the digital supply I_{dig} and the area of the digital section will be lower when radiation resistance is not required and a standard digital library is chosen instead of a radiation-hardened one. The area A_{analog} and the current I_{ref} drawn from the reference supply can be scaled down when higher noise levels are acceptable. See section 'Detailed description' for details.

** The current drawn from the digital supply I_{dig} includes the current for clock division and interface circuitry. Without this, I_{dig} is $\sim 250\ \mu\text{A}$.

Detailed description

The SDCRDAC24b contains a second-order sigma-delta modulator which runs at $f_{CLK}/20$ or $f_{CLK}/80$. The design is measured using an OSR of 500 ($f_{s,in}=100$ S/s) but other input data rates are also possible. At low frequencies, $1/f$ noise is the dominant noise source, as visible in figure 3. At higher frequencies, noise performance is limited by thermal noise (designed to be 9 nV/ $\sqrt{\text{Hz}}$), so the SNR scales with 3 dB/octave of signal bandwidth. Dithering is added to prevent tonal limit cycles. A dynamic element matching unit shapes the noise due to front-end element mismatch to out-of-band frequencies. The DAC is well suited to be included inside control loops, because the sigma-delta modulator has unity gain and no phase shift, and the latency is only 17 clock cycles (4.25 μs at $f_{CLK}=4$ MHz).

Upon request, scaled versions of the DAC are also available. The area of the analog section A_{analog} can be scaled in steps of a factor four. Roughly, a reduction of a factor of four results in 6 dB higher in-band noise, and 9 dB higher out-of-band noise.

As in any DAC, the output SNR is limited by the SNR of the reference voltage (since $V_{out} = \text{code} \cdot V_{ref}$). In this DAC, the reference is not buffered internally, so the external reference needs to have a sufficiently high SNR. The reference is loaded by a switched capacitor (200 pF is fully charged, once every four clock cycles). Care has been taken to prevent code-dependent kick-back noise to the reference supply.

The switched-capacitor output of this DAC is not buffered internally, to enable a wide variety of applications and to minimize $1/f$ noise. The output is switched at a frequency of $f_{CLK}/4$, typically 1 MHz.

Typical applications

The SDCRDAC24b has been designed to directly deliver a voltage output to a buffer capacitor without requiring additional active filtering. This application is shown in figure 2. A load with an $R_L C_L$ time constant of 1 ms (e.g. 1 M Ω // 1 nF) results in an out-of-band noise of lower than -60 dBc. The two 10 pF single-ended capacitors filter common-mode noise. With this voltage-mode output, the THD is ultimately limited by the linearity of the DAC capacitors. An alternative application is to inject the charge into the virtual ground input of a subsequent opamp stage, which will eliminate the dependence on capacitor linearity and therefore will improve linearity of the DAC.

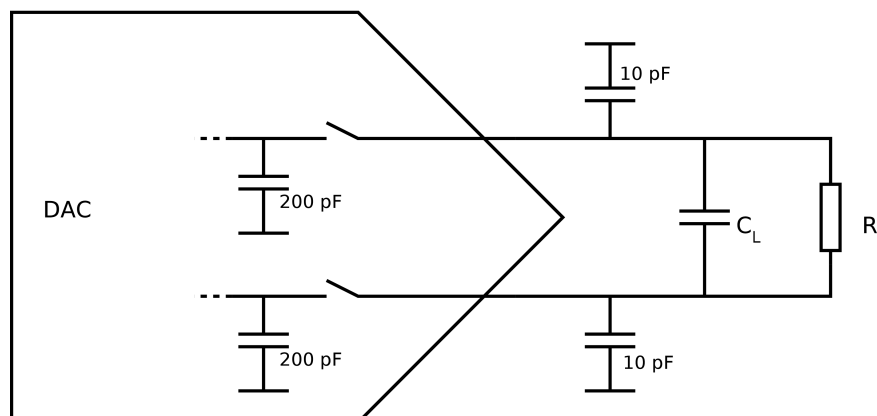


Figure 2: application with voltage-mode output

Typical performance characteristics

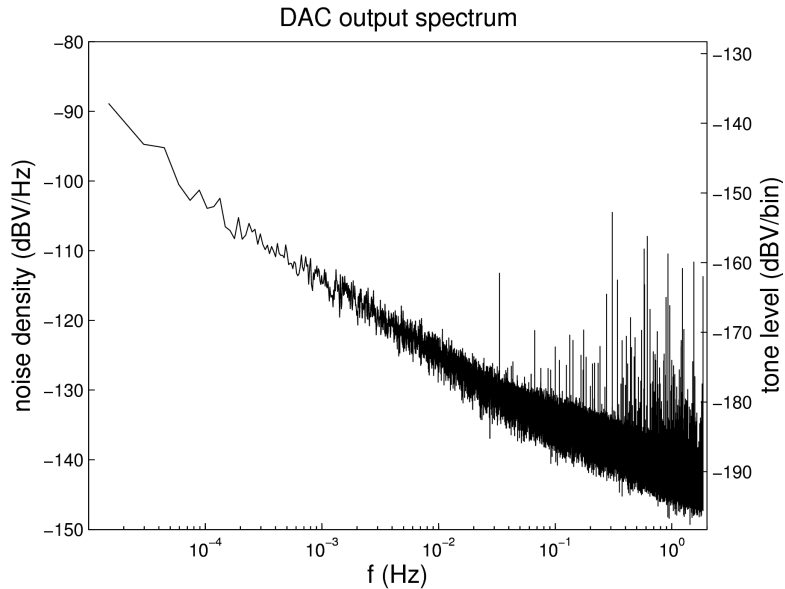


Figure 3: measured output spectrum

The measured noise spectrum shown in figure 3 contains some spurious signals above 30 mHz that are due to the measurement setup. Due to the long integration time these spurious tones appear stronger than the noise, but their levels are actually lower than -153 dBV, far smaller than 1 LSB.

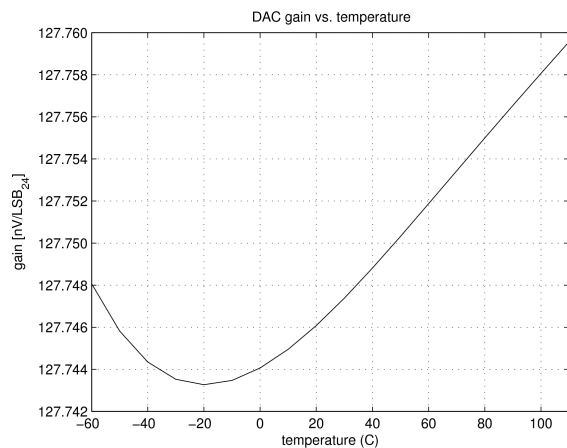


Figure 4: typical DAC gain vs. temperature (load 1 M Ω // 1 nF)

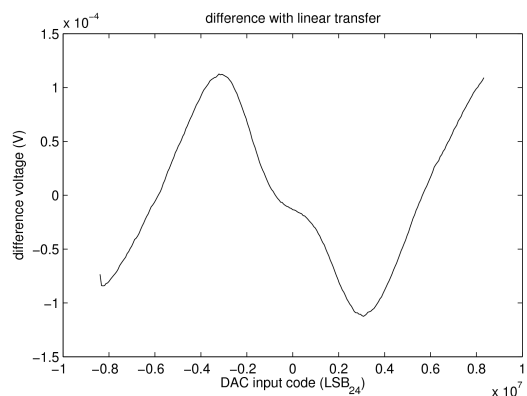


Figure 5: difference between measured DAC output and ideal linear transfer (load 1 M Ω // 1 nF)

Ports list

port name	width	description
data	24	Input data in 24-bits PCM format
clk	1	clock input
clk_LF	1	Modulator clock output; data sampled on rising edge
reset_n	1	Reset input, active low
pwrDwn	1	Power down input, active high
clkRatio	1	Selects oversampling ratio of modulator, active high
ditherEn	1	Enables dither generation in modulator, active high
Out_p	1	Analog output (positive)
Out_n	1	Analog output (negative)
VDDD	1	Supply for digital section (1.8 V)
GNDD	1	Digital ground
VDDA	1	Supply for analog section (1.8V)
GNDA	1	Analog ground
Vref	1	Reference voltage (1.8V)
GNDREF	1	Reference ground

Note that these are only the external port names. When integrating the GDSII layout database for the analog front-end and the RTL code for the digital blocks of the DAC, some internal ports are used as well. These are described in detail in the documentation delivered with the IP.

Deliverables

In its current form, the IP block will be delivered as a combination of RTL code for the digital part and a layout database for the analog part. The total package contains:

- RTL code in VHDL for the digital part
- GDSII layout database of the DAC front-end
- abstract LEF file of the DAC front-end
- netlist of the DAC front-end, for behavioral modeling and layout verification
- documentation, including assembly guidelines
- test benches: RTL test bench for the digital part and a Verilog-A block that reads the digital output file into the analog simulation environment

Alternatively, Axiom IC can take care of the synthesis and place&route of the digital part, and deliver the complete IP block as a single GDSII layout database. Axiom IC engineers can also integrate the product as part of a SoC engagement in cooperation with the customer.

As mentioned under 'detailed description', other versions of this DAC, with scaled area and performance, can also be delivered. Upon request, the design can also be ported to other processes, as the circuit behavior is largely independent of technology. Please contact Axiom IC for more information.

Revision history

Revision	Date:	Reason for revision
F1	2009-05-05	Initial version

Axiom IC is a design house that develops integrated circuits for silicon chips. Axiom IC focuses on the design of state-of-the-art analog and mixed-signal circuits in CMOS and BiCMOS, in close cooperation with its customers. Based on our long history in industrial IC design and research, we are able to design robust ICs with short design cycles and high quality levels. Our goal is to use our expertise for customer-specific design services, covering the entire range from feasibility studies and design to layout and verification.

A continuously growing IP portfolio enables us to quickly respond to customer demands giving you a short time to market. For more information please look at the web site www.axiom-ic.com or send an e-mail to: info@axiom-ic.com

Axiom IC B.V.
Colosseum 28
7521 PT Enschede
The Netherlands

Phone: +31 (0)53-7370010
Fax: +31 (0)53-7370011
Email: info@axiom-ic.com
Web: www.axiom-ic.com